



CHRYSLER PACIFICA LIMITED PINNACLE HYBRID

CARACTERISTIQUES DU VEHICULE

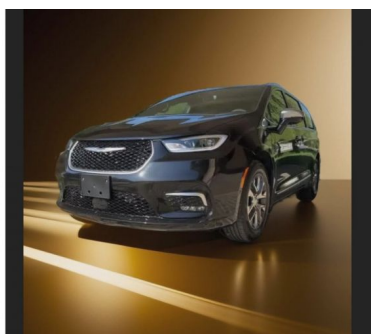
81.350 € TTC

Marque	Chrysler	Kilométrage	1 km
Modèle	Pacifica	Mise en circulation	05/2024
Transmission	Automatique	Garantie	-
Catégorie		Couleur int.	-
Energie	-	Couleur ext.	Noir
Puis. din.	264 ch (195 kW)	Nb. de portes	5
Puis. fiscal	-	Emission CO2	67 g/km

DESCRIPTION ET EQUIPEMENTS

NEW 2023 Chrysler Pacifica Hybrid Limited Our new Hybrid Pacifica is a perfect Familycar with a lot of space and family features. What does the Pacifica offer too : **Brillant Black Crystal Pearl Engine : 3.6L Pentastar VVT V6 Hybrid Transmission : eFlite Electrically Variable Nappa Leather-Faced Front Vented Seats Mid Century Timber Accents Uconnect Theater Family Group Package: Video USB Port, HDMI Port, 3-Channel Video Remote Control, Front Seatback Dual 10" Touchscreens, KeySense Programmable Key Fob, 2nd & 3rd Row Window Shades, 115-Volt Auxiliary Power Outlet, Famcam Interior Camera, Amazon Fire TV Built-In Blind-Spot Monitoring with Rear Cross-Path Detection Parkview® Rear Back-Up Camera Park-Sense® Rear Park Assist with Active Braking Forward Collision Warning with (...)**

PHOTOS DU VEHICULE



POUR NOUS CONTACTER

	US-CARS IMPORT	E-mail	lepage.patrick@uscarsimport.lu
Adresse	44 Route de la Sure	Téléphone 1	+352836420
Code postal	L-9390	Téléphone 2	+352691295526
Ville	Reisdorf	Fax	-